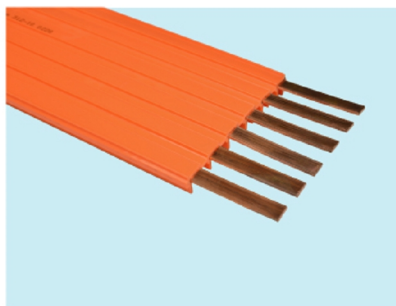
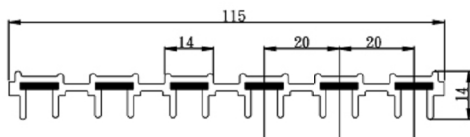


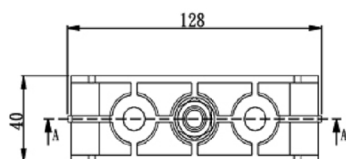
6P Safety power rail



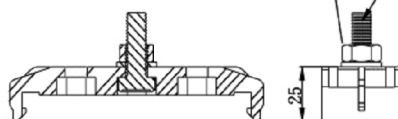
OFC 3N (99.9%, good conductivity)



6P (Phase) Safety Power Rail			
Type	Capacity (A)	Width (mm)	Weight (Kg/m)
PWL-4-026	75	10	1.64
PWL-4-027	100	10	2.06
PWL-4-028	150	10	3.28
PWL-4-029	200	10	4.12

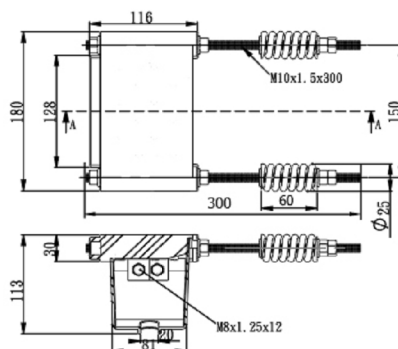


Use with C Track Support and C Plate M10 Nut 30 x 20 x 5^t



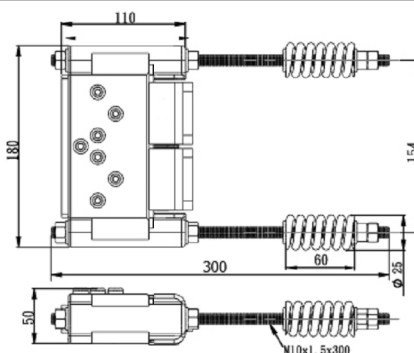
PWL-4-030
6P Hanger Clamp

0.1 kg / pc



Cancelled
6P End Tension & Power in

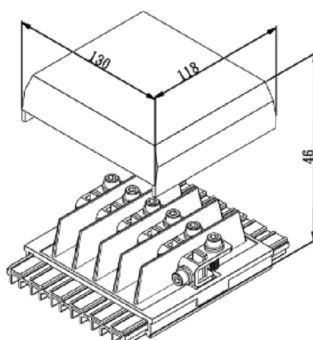
1.9 kg / pc



Power rail PVC peel free!

PWL-4-031
6P End Tension & Power in

1.9 kg / pc



PWL-4-035
6P Middle Tension & Power in

0.38 kg / pc